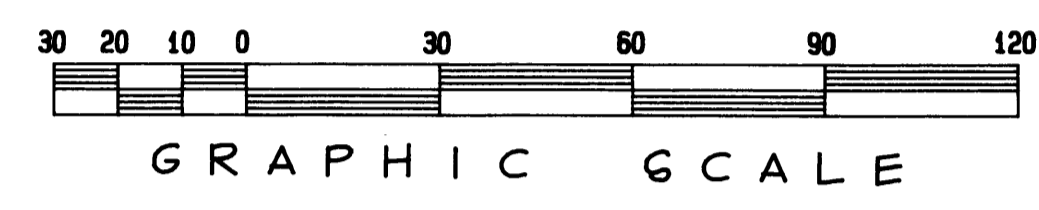


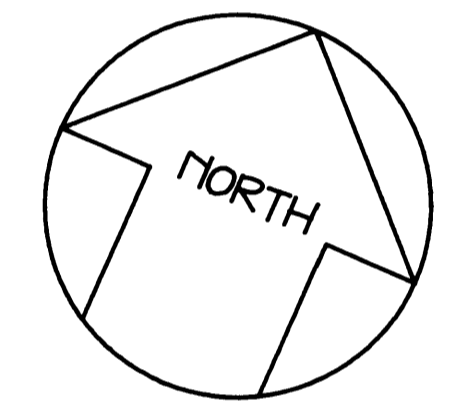
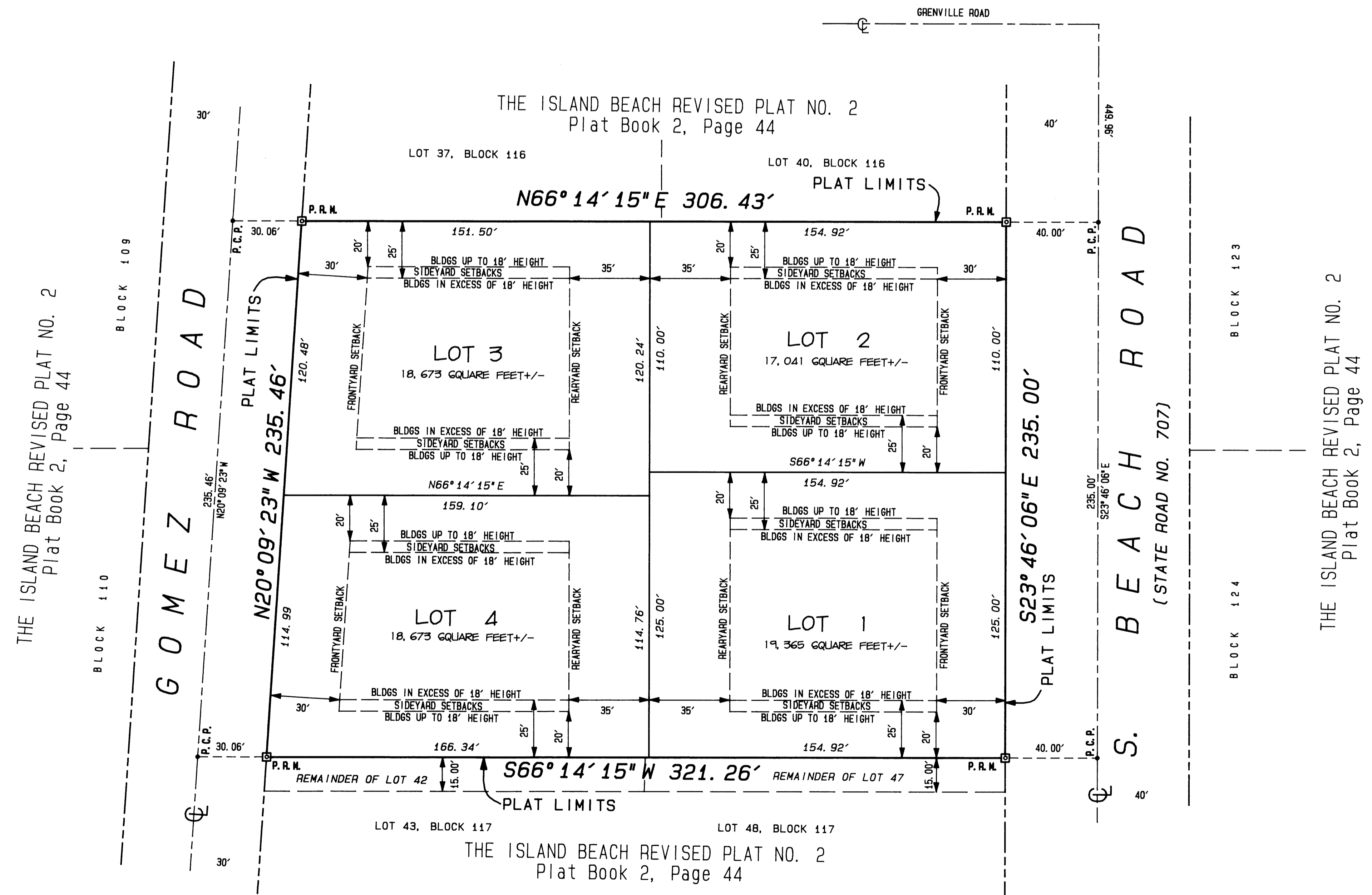
SOUTH CLUB ESTATES

BEING A REPLAT OF LOTS 38 AND 41, BLOCK 116 AND LOTS 42 AND 47, BLOCK 117; LESS: THE SOUTH 15.00 FEET THEREOF, THE ISLAND BEACH REVISED PLAT NO. 2, PLAT BOOK 2, PAGE 44, PUBLIC RECORDS OF MARTIN COUNTY, FLORIDA.
TOWN OF JUPITER ISLAND
MARTIN COUNTY, FLORIDA
SHEET 2 OF 2

I, MARSHA STILLER, CLERK OF THE CIRCUIT COURT OF MARTIN COUNTY, FLORIDA, HEREBY CERTIFY THAT THIS PLAT WAS FILED FOR RECORD IN PLAT BOOK 13, PAGE 100, MARTIN COUNTY PUBLIC RECORDS. THIS 20 DAY OF Nov. 1995.
MARSHA STILLER
CLERK, CIRCUIT COURT
MARTIN COUNTY, FLORIDA
BY: *Deborah Longston*
DEPUTY CLERK
FILE NO. 1145719



THERE MAY BE ADDITIONAL RESTRICTIONS THAT ARE NOT RECORDED ON THIS PLAT, THAT MAY BE FOUND IN THE PUBLIC RECORDS OF THIS COUNTY.



SCALE: 1" = 30'

SUBDIVISION PARCEL CONTROL NUMBER:

R. L. VAUGHT & ASSOCIATES, INC.
LAND SURVEYORS & PLANNERS
9075 G.E. BRIDGE ROAD, HOPE GOUND, FL.
MAIL: P.O. BOX 160 HOPE GOUND, FL 33475
PHONE: 407 546-8086 FAX: 407 546-8087

ORDER #: 804340 FIELD BOOK: PB102/4 JUNE 5, 1995